



JEBSEN & JESSEN



JebChem

PIGMENTS

# PIGMENTS

Our pigments are sourced exclusively from trusted manufacturers and extensively tested. They provide excellent colouring properties and are easily integrated into existing formulations.

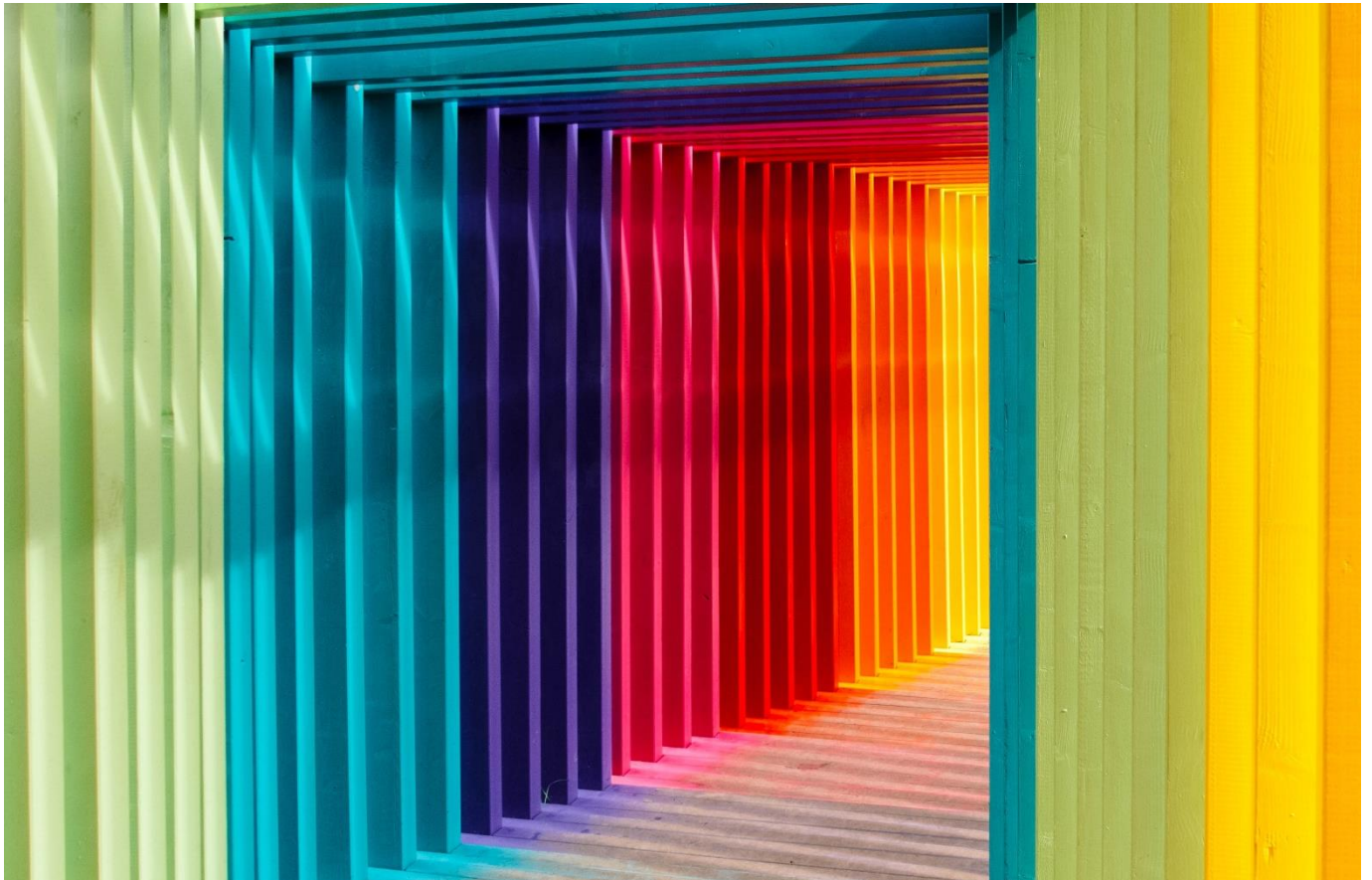
JebChem pigments provide excellent stability and permanence for your formulations. We have a wide range of samples available for your requirements.



## PRODUCT RANGE – PIGMENTS

Product Name	Features
JebChem PB-1150 WU	C.I. number PB 15:0, Blue reddish shade
JebChem PB-1152 UP	C.I. number PB 15:2, Blue reddish shade
JebChem PB-1153 SU	C.I. number PB 15:3, Blue greenish shade
JebChem PB-1153 WU	C.I. number PB 15:3, Blue reddish shade, clean
JebChem PB-1154 SI	C.I. number PB 15:4, Blue greenish shade, transparent
JebChem PB-4150 SP	C.I. number PB 15:0, Blue reddish shade
JebChem PB-4151 WP	C.I. number PB 15:1 Especially for water base paint
JebChem PB-4153 SI	C.I. number PB 15:3, Blue bright greenish shade

Product Name	Features
JebChem PB-4153 UP	C.I. number PB 15:3, Blue bright greenish shade
JebChem PB-4154 SI	C.I. number PB 15:4, Blue greenish shade
JebChem PG-1007 U1	C.I. number PG 7, Green yellowish shade
JebChem PG-1007 U2	C.I. number PG 7, Green bluish shade
JebChem PG-4007 SI	C.I. number PG 7, All solvent base inks application
JebChem PR-5122 UU	C.I. number PR 122, Bluish shade, outstanding fastness properties
JebChem PV-1027 WI	C.I. number PB 27, Blue bright redish shade
JebChem PV-5023 UU	C.I. number PV 23



# FUNCTIONAL OVERVIEW – PIGMENTS

Product Name	System		Paint									Ink			
	Solvent Base	Water Base	Architecture	Automotive	Coil/Baking	Heavy Duty	Pigment Paste	Plastics/Industrial	UPE/FRP	UV Curing	Wood	Flexo	Gravure	Offset	Screen
JebChem PB-1150 WU		•	•	•	•	•	•	•	•	•	•	•	•	•	•
JebChem PB-1152 UP	•	•	•	•	•	•	•	•	•	•	•				
JebChem PB-1153 SU	•		•	•	•	•	•	•	•	•	•	•	•	•	•
JebChem PB-1153 WU		•	•	•	•	•	•	•	•	•	•	•	•	•	•
JebChem PB-1154 SI	•											•	•	•	•
JebChem PB-4150 SP	•		•	•	•	•	•	•	•	•	•				
JebChem PB-4151 WP		•	•	•	•	•	•	•	•	•	•				
JebChem PB-4153 SI	•											•	•	•	•
JebChem PB-4153 UP	•	•	•	•	•	•	•	•	•	•	•				
JebChem PB-4154 SI	•											•	•	•	•
JebChem PG-1007 U1	•	•	•	•	•	•	•	•	•	•	•	•	•	•	•
JebChem PG-1007 U2	•	•	•	•	•	•	•	•	•	•	•	•	•	•	•
JebChem PG-4007 SI	•											•	•	•	•
JebChem PR-5122 UU	•	•	•	•	•	•	•	•	•	•	•	•	•	•	•
JebChem PV-1027 WI		•										•	•	•	•
JebChem PV-5023 UU	•	•	•	•	•	•	•	•	•	•	•	•	•	•	•





JEBSEN & JESSEN

JebChem

#### CAMBODIA

Jebsen & Jessen Cambodia Ltd  
2nd Floor Delano Center, #144 Street 169,  
Phnom Penh, Cambodia  
Phone: +66 2 787 8700

#### CHINA

Jebsen Specialty Chemicals Co. Ltd  
10/F, Tower 2, Henderson Centre,  
18 Jian Guo Men Nei Avenue,  
Beijing, PR China 100005  
Phone: +86 22 5906 0301

#### INDONESIA

PT. Jebsen Jessen Ingredients Indonesia  
Graha Inti Fauzi 7th Floor,  
Jalan Buncit Raya No 22,  
Jakarta 12510, Indonesia  
Phone: +62 21 2753 7177

#### MALAYSIA

Jebsen & Jessen Malaysia Sdn Bhd  
Level 13A, UOA Business Park (Tower 7),  
Jalan Pengaturcara U1/51A Seksyen U1,  
Selangor Darul Ehsan, Malaysia  
Phone: +60 3 5030 6388

#### MYANMAR

JJ-Pun Ltd  
The Campus, 1st Floor, Wing-A,  
Rain Tree Drive, Pun Hlaing Estate,  
Yangon 11401, Myanmar  
Phone: +95 1 368 77 90~96

#### PHILIPPINES

Jebsen & Jessen Ingredients (P) Inc  
5F, One Orion Building, 11th Avenue Corner  
38th Street, Bonifacio Global City,  
1634 Taguig City, Philippines  
Phone: +632 786 7700

#### SINGAPORE

Jebsen & Jessen Ingredients (S) Pte Ltd  
2 Corporation Road,  
#03-06 Corporation Place (Main Lobby),  
Singapore 618494  
Phone: +65 6305 3488

#### THAILAND

Jebsen & Jessen Ingredients (Thailand)  
23/110-117, Sorachai Building 28th Floor,  
Soi Sukhumvit 63 (Ekamai), Klongton Nua,  
Wattana 10110 Bangkok Thailand  
Phone: +66 2 787 8700

#### VIETNAM

Jebsen & Jessen Ingredients Vietnam Ltd  
Unit 1205 Sailing Tower,  
111A Pasteur Street, District 1,  
Ho Chi Minh City, Vietnam  
Phone: +84 28 6288 7628

**JEBCHEM.COM**

**CoatingSolutions@jjsea.com**

